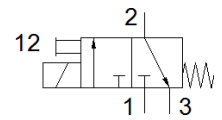
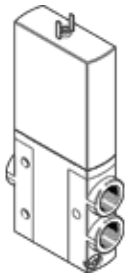


# solenoid valve

## MHE4-M1H-3/2G-1/4

Part number: 525186

FESTO



### Data sheet

| Feature                                 | Value  |
|---|--|
| Valve function                          | 3/2 closed, monostable   |
| Type of actuation                       | electrical   |
| Width                                   | 18 mm  |
| Standard nominal flow rate              | 400 l/min  |
| Operating pressure                      | -0.9 ... 8 bar   |
| Design structure                        | Pressure-relieved poppet valve   |
| Type of reset                           | mechanical spring  |
| Protection class                        | IP65   |
| Authorisation                           | c UL us - Recognized (OL)  |
| Nominal size                            | 4 mm   |
| Grid dimension                          | 24 mm  |
| Exhaust-air function                    | throttleable   |
| Sealing principle                       | soft   |
| Assembly position                       | Any  |
| Manual override                         | Pushing  |
| Type of piloting                        | direct   |
| Flow direction                          | reversible with restrictions   |
| Overlap                                 | Underlap   |
| Operating pressure, reversible          | -0.9 ... 1 bar   |
| Maximum switching frequency             | 120 Hz   |
| Switching time off                      | 5 ms   |
| Switching time on                       | 10.5 ms  |
| Duty cycle                              | 100 %  |
| Characteristic coil data                | 24 V DC: 5.6 W   |
| Permissible voltage fluctuation         | +/- 10 %   |
| Operating medium                        | Compressed air in accordance with ISO8573-1:2010 [7:4:4]                                       |
| Note on operating and pilot medium      | Lubricated operation possible (subsequently required for further operation)                    |
| Vibration resistance                    | Transport application test at severity level 2 in accordance with FN 942017-4 and EN 60068-2-6 |
| Shock resistance                        | Shock test with severity level 2 in accordance with FN 942017-5 and EN 60068-2-27              |
| Corrosion resistance classification CRC | 2 - Moderate corrosion stress  |
| Medium temperature                      | -5 ... 60 °C   |
| Ambient temperature                     | -5 ... 60 °C   |
| Product weight                          | 270 g  |
| Electrical connection                   | Plug<br>2-pin  |
| Mounting type                           | with through hole  |
| Pneumatic connection, port 1            | G1/4   |
| Pneumatic connection, port 2            | G1/4   |
| Pneumatic connection, port 3            | G1/4   |
| Materials note                          | Free of copper and PTFE<br>Conforms to RoHS  |
| Material seals                          | HNBR<br>NBR  |
| Material housing                        | Zinc die-casting<br>coated   |
| Material screws                         | Steel<br>Galvanised  |